

**Creating a World-Class Research Environment Suitable
for an International Center in the Social Sciences**

Faculty Building 3 and Kunitachi International Guesthouse Completed

**Faculty Building 3:
A New International Research Center**



New Addition to Guesthouses



Faculty Building 3: A New International Research Center

To create a world-class research environment and global network, Hitotsubashi University needs to attract outstanding academics at the top of their field. Adding the network of academic visitors to the university to the human network that the university has already developed will be very effective in promoting the internationalization of education and research. With the worldwide mobility in human resources that exists today, the better the academics, the more the attention gathered from around the world.

It is against this background that Hitotsubashi University planned Faculty Building 3, a facility that is specially designed for research and is suited to the research styles of global academics.

In designing Faculty Building 3, we took care to ensure that the building blended with the campus

overall. The four-story steel-reinforced concrete structure has a total floor area of about 2,266 square meters, and has an elegant facade that blends perfectly with the majestic and verdant Kunitachi campus.

The key design concepts for Faculty Building 3 were (1) to design a research-centered building, (2) to adopt an architectural style that blends with the neighboring buildings, and (3) to equip the building with outstanding research facilities.

Our core aim, therefore, was to create a well-equipped and congenial space for long- and short-term visitors from overseas to perform their research. Our other aim was to provide support so that young researchers could perform their work in an excellent environment.



Faculty Building 3: Overview



Entrance



Seminar room



Multipurpose room



Conference room



New Addition to Guesthouses



To promote internationalization, it is very important to improve the living environment for international students and researchers. About 450 international students and researchers and about 350 Japanese students already live in the Hitotsubashi University International Dormitories and the Kodaira International Guesthouse on the Kodaira Campus. At these housing facilities there is exchange with the local community, including various programs, festivals, jointly sponsored events, and classes to learn about Japanese culture. The Kunitachi Campus also provides housing exclusively for overseas researchers.

In April 2010 the Kunitachi International Guesthouse was completed near the Kunitachi Campus. The university decided to construct the guesthouse because more and more researchers

are invited from overseas every year, as Hitotsubashi promotes internationalization. As seen in the planning of Faculty Building 3, the conditions under which researchers visit Japan from overseas has changed in recent years. Visiting professors normally stay for one year, but there are now more and more who come for short-term projects.

The Kunitachi International Guesthouse is located in a quiet residential section of Kunitachi so a design that blended with the surrounding area was selected. Of course, care was also taken to ensure a high-quality, comfortable living environment.

With the completion of this new guesthouse, there are now three housing facilities on the Kunitachi Campus and one housing facility on the Kodaira Campus for overseas researchers.



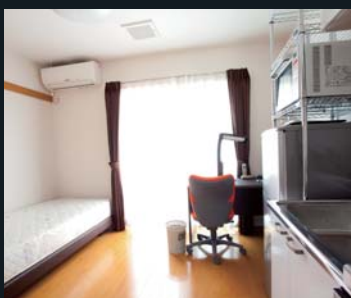
Kunitachi International Guesthouse: Overview



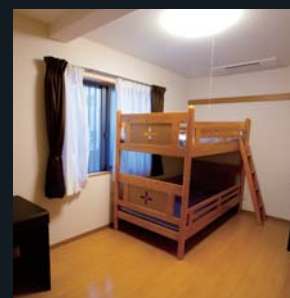
Entrance



Room for married students



Room for single students



Room for students with children

